



# Living Things and Their Habitats – Year 5 Biology

## Key vocabulary

<b>life cycle</b>	This shows how things are born, how they grow and how they reproduce.
<b>reproduction</b>	As part of their life cycle plants and animals reproduce. There is sexual and asexual reproduction.
<b>sexual reproduction</b>	Both the male and female are needed. Most animals reproduce sexually.
<b>asexual reproduction</b>	Only one parent is needed. This occurs mostly in plants and bacteria.
<b>fertilise</b>	In animals: When the male sperm reaches the female egg. In plants: When the male pollen reaches the female ovule.
<b>metamorphosis</b>	A major change from one form to another in the life cycle of some animals when they change from young to an adult.
<b>runner</b>	A long stem of a plant that grows along the ground in order to put down roots in a new place.
<b>bulb</b>	A round root of some plants from which the plant grows.
<b>cutting</b>	A piece, such as a roof, stem or leaf cut from a plant and used to grow another plant of the same type.
<b>tuber</b>	A swollen underground stem or root of a plant from which new plants can grow.

## Significant scientist

**David Attenborough**  
(born 1926)

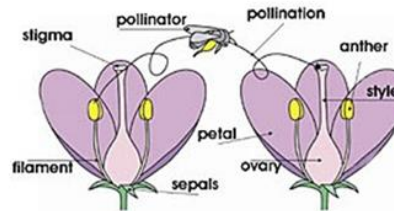


Sir David is an English broadcaster and naturalist. He has made many famous wildlife programmes. He was knighted in 1985.

## Plants reproduce both sexually and asexually

### Sexual reproduction

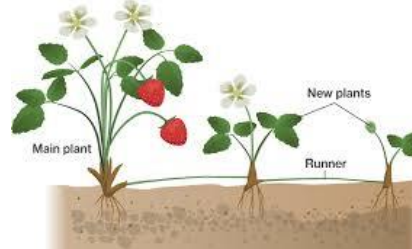
occurs through pollination usually involving wind or insects.



E.g. lily, apple tree, tomato

### Asexual reproduction

involves only one parent using bulbs, tubers, runners and cuttings.

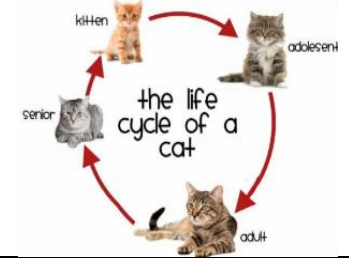


E.g. spider plant, potato, strawberry

## Life cycles of animals

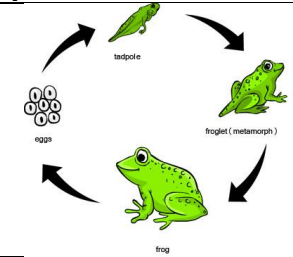
### Mammal

- female gives birth to young
- Live young are born
- young looks like adult
- female provides milk for young



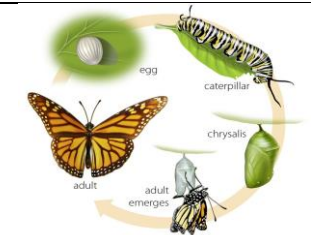
### Amphibian

- eggs laid in water
- young go through different form before looking like adult
- no parental care



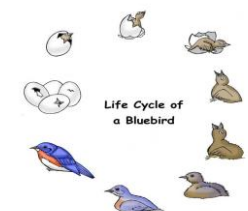
### Insect

- egg laid and then hatch
- some grow to adult but most go through metamorphosis to adult



### Bird

- eggs laid in a nest
- young hatches from an egg
- grow to adult
- parental care after hatching





# Living Things and Their Habitats – Year 5 Biology